



PREMIUM POWDER COATINGS

Premium Powder Coatings



PREMIUM

Premium Powder Mfg. Co.

(An ISO 9001 : 2015 Certified)

Plot No.-18, Sector - 06, Faridabad - 121006,
Haryana, INDIA, Phone : 0129-4876045

E-mail : info@premiumpowder.co.in

Web : www.premiumpowder.co.in



HY MATT BROKEN WHITE -2
02MN00061



HY Matt Ivory White
02MN00066



HY MATT BLACK 9005
82MR09005



HY MATT DARK TURQUOISE BLUE
12MN00155



HY MATT TRAFFIC GREEN
22MR06024



HY MATT OLIVE GREEN
22MI00220



HY MATT CREAM
32MN00350



HY MATT LIGHT SCAMIC GREEN
22MP00419



HY MATT BISCUIT
42MN00350



HY MATT BCB
42MN00450



HY MATT DARK BROWN
42MN00441



HY MATT HARDWARE BROWN
42MN00430



HY MATT COFFEE BROWN
42MN00432



HY MATT PO RED
52MI00538



HY MATT MAROON
52MN00525



HY MATT RAL 7032
62MR07032



HY MATT RAL 7035
62MR07035



HY MATT DA GREY
62MI00632



HY MATT MUNSHELL GREY 7045
62MR07045



EX DEAD MATT BLACK
81DN00915



HY MATT BLACK 08
82MN00908



HY MATT BLACK 09
82MN00909



HY MATT BLACK 10
82MN00910



**PREMIUM
POWDER COATINGS**



HY SATIN PURE WHITE
02SR09010



HY SATIN SUPER WHITE
02SN00054



HY SATIN KANGAROO BLUE
12SN00135



HY SATIN REEF BLUE
12SN00152



HY SATIN PARROT GREEN
22SP00369



HY SATIN CREAM
32SR09001



HY SATIN LIGHT BEIGE
42SN00335



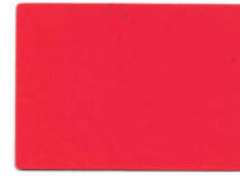
HY SATIN SAND BEIGE
42SN00345



HY SATIN YELLOW ORANGE
52SR02000



HY SATIN TELE MAGENTA
52SR04010



HY SATIN DARK ROSE PINK
52SN00545



HY SATIN RAL 7032
62SR07032



HY SATIN RAL 7035
62SR07035



HY SATIN LIGHT
ADMIRALTY GREY
62SI00697



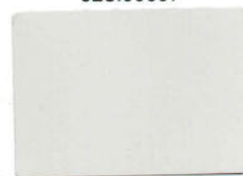
HY SATIN SIGNAL GREY
62SR07004



HY SATIN BLACK
82SN00904



HY SATIN BEIGE IVORY
32SN00306



HY SATIN MIDAS GREY
62SN00667



HY SATIN BROWN BLACK
82SN00920



HY SATIN BLACK PURPLE
72SN00710



HY SUPER GOLD
32KN00347



HY MATT GOLD
32KN00352



HY STAR GOLD
32KN00355



HY MATT ROYAL GOLD
32KN00357



HY PERTH GOLD
32KN00365



HY BEECH COPPER
42KN00443



HY VENETIAN BRONZE
42KN00446



HY METALLIC PEARL BEIGE
42KR01035



HY METALLIC MATT DC GREY
62KN00621



HY SILVER ASH SPL
62KN00643



HY SHINE SILVER
62KN00637



**PREMIUM
POWDER COATINGS**



HY STR PURE WHITE
02RR09010



HY STR SIGNAL WHITE
02RR09003



HY STR GREY WHITE
02RR09002



HY STR LIGHT LISTA BLUE
12RN00138



HY STR WATER BLUE
12RN05021



HY STR PEPSI BLUE
12RN00140



HY STR VIP BLUE
12RN00125



HY LEATHERITE DARK BROWN
42LN00438



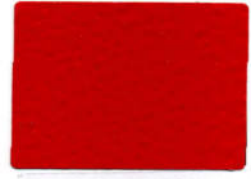
HY STR DARK ROSE PINK
52RN00545



HY STR TELEMAGENTA
52RR04010



HY STR PO RED
52RI00538



HY STR SIGNAL RED
52RR03001



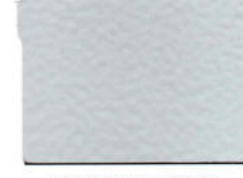
HY STR MAROON
52RN00521



HY STR SMOKE GREY
62RI00692



HY STR RAL 7032
62RR07032



HY STR RAL 7035
62RR07035



HY STR MUNSHELL GREY
62RN00647



HY STR IS 631
62RI00631



HY STR DUSTY GREY
62RR07037



HY STR DARK GREY
62RN00620



HY STR DA GREY
62RI00632



HY STR LIME STONE GREY
62RN00668



HY STR GARDENIA CREAM
32RN00349



HY STR PURPLE
72RN00755



HY STR BLACK
82RN00924



HY LEATHERITE BLACK
82LN00926



HY STR SAND BEIGE
42RN00345



HY STR COOL GREY
62RP00006



HY STR YELLOW ORANGE
52RR02000



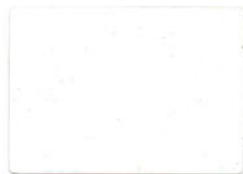
HY STR RAL 7032 (F)
62RR37032



HY STR RAL 7035 (F)
62RR37035



**PREMIUM
POWDER COATINGS**



HY GLOSSY PURE WHITE
02GR09010



HY GLOSSY SIGNAL WHITE
02GR09003



HY GLOSSY BASE WHITE
02GN00048



HY GLOSSY PREMIUM WHITE
02GN00040



HY GLOSSY DEEP BLUE
12GN00165



HY GLOSSY TRAFFIC BLUE
12GR05017



HY GLOSSY PEPSI BLUE
12GN00140



HY GLOSSY OXFORD BLUE
12GI00105



HY GLOSSY IVORY
32GN00318



HY GLOSSY PEARL IVORY
32GN00308



HY GLOSSY LIGHT CREAM
32GN00317



HY GLOSSY SIGNAL RED
52GR03001



HY GLOSSY PO RED
52GI00538



HY GLOSSY MAROON
52GN00518



HY GLOSSY TEAK WOOD BROWN
42GP00470



HY GLOSSY USHA BROWN
42GN00446



HY GLOSSY BROWN
42GN00440



HY GLOSSY RAL 7035
62GR07035



HY GLOSSY MUNSHELL GREY
62GN00640



HY GLOSSY SMOKE GREY
62GI00692



HY GLOSSY DA GREY
62GI00632



HY GLOSSY PURPLE
72GN00755



HY GLOSSY GOLDEN BROWN
42GN00458



HY GLOSSY BLACK SPL.
82GN00902



HY GLOSSY ORANGE
52GN00580



HY GLOSSY VERMILION
52GR02002



HY GLOSSY UMBRA GREY
62GR07022



HY GLOSSY PISTA GREEN
22GN00278



HY GLOSSY LIGHT LEAF GREEN
22GN00253



HY GLOSSY OCEAN BLUE
12GR05020



**PREMIUM
POWDER COATINGS**

TEXTURE FINISH



HY TEX PEPSI BLUE
12TN00141



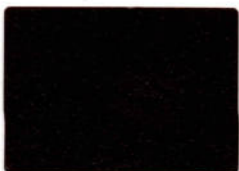
HY TEX DARK NIGHT BLUE
12TN00123



HY TEX SIGNAL WHITE
02TR09003



HY TEX JAY WHITE
02TN00078



HY TEX CLOUD BROWN
42TN00445



HY TEX DARK GREY (M)
62TN00630



HY TEX MIDAS GREY
62TN00663



HY TEX RAL 7032
62TR07032



HY TEX RAL 7035
62TR07035



HY TEX BLACK GREY
62TN00618



HY TEX DUSTY GREY
62TR07037



HY TEX BLACK
82TN00937



HY FINE TEX BLACK
82TN00930



HY TEX JET BLACK
82TR09005



HY WRINKLE BLACK
82WN00820



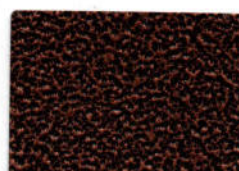
HY WRINKLE DARK GREY
62WN00638



HY TEX STONE GREY
62TR07030



HY ALLIGATOR PURPLE
72ZN00755



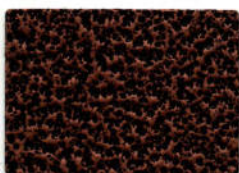
HY ANTIQUE COPPER
82AN00427



HY ANTIQUE SILVER
82AN00628



HY ALLIGATOR MAROON
52ZN00525



HY GLOSSY ANTIQUE COPPER
82AN00429



HY METALLIC TEX BEIGE GREY
62KN00446



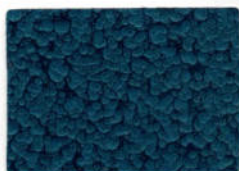
HY GLOSSY ANTIQUE GOLD
82AN00332



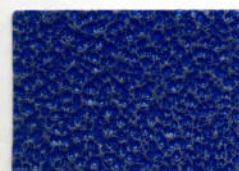
HY ALLIGATOR DARK BROWN
42ZN00438



HY HAMMERTONE GREY
62HN00650



HY HAMMERTONE PEACOCK BLUE
12HN00135



HY ANTIQUE BLUE
12AN00140

* The Colors Shown in this card are Indicative only.
* Use Clear coat on metallic products to avoid oxidation.



**PREMIUM
POWDER COATINGS**

METALLIC FINISH

**Premium Powder Mfg. Co. Specialises in following systems of powder coatings.
Epoxy, Epoxy Polyester (Hybrid), Polyester and Polyurethane.**

Pre-treatment:

Epoxy, Epoxy Polyester, Polyester and Polyurethane powders adhere to most metals and do not require any primer. Articles to be coated must be free from rust, grease, oil and mill scale. In order to improve corrosion resistance the use of iron/zinc or tricationic phosphate is strongly recommended. Aluminium should be pre-treated using a chromate conversion system prior to powder coating. To achieve good adhesion on stainless steel substrate, a strong acid etch or the use of iron phosphate containing fluoride is recommended. Zinc based die-casting and Zintec should also be pre-treated.

Application Guidelines:

Epoxy, Epoxy Polyester, Polyester and Polyurethane powders are suitable for use with all electrostatic powder spraying equipment. Voltage between 40-100 kv may be applied. The powders are sprayed electro-statically onto earthed metallic substrate and an even layer of powder deposited. Thereafter, substrate with uniform layer of powder on it is subjected to specific curing temperature. The powder melts and flows to form a continuous cured film, resulting in a coating with mechanical and chemical properties. Typical coating thickness should be 40 - 100 microns depending upon powder system and finish.

Epoxy Powders form a hard and tough film with excellent chemical resistance. Surface chalking will develop on exterior exposure. Recommended for interior use and where high degree of surface hardness and resistance to solvents and chemicals required.

Epoxy Polyester Powders also know as **Hybrid Powders**

provide a tough coating with excellent resistance to corrosion and mechanical damage. Slight surface chalking will develop after prolonged exterior exposure.

Polyester Powders also know as **Pure Polyester Powders**

have excellent chemical resistance and mechanical properties. Polyester powders have been formulated to give hard, durable finishes with very good light and weather resistance on prolonged exterior exposure.

Polyurethane Powders have excellent flow characteristics with excellent chemical and mechanical properties. Their outstanding corrosion resistance and excellent external exposure properties make them suitable alternative to polyester powders.



PREMIUM

Premium Powder Mfg. Co.

(An ISO 9001 : 2015 Certified)

Plot No.-18, Sector - 06, Faridabad - 121006,
Haryana, INDIA, Phone : 0129-4876045

E-mail : info@premiumpowder.co.in

Web.: www.premiumpowder.co.in

ABOUT US

Premium Powder Mfg. Co. is Epoxide Resins/ Powder coating Powder manufacturing organization established by competent, experienced and committed professionals. Premium Powder Mfg. Co. commenced its commercial operation with sizeable installed capacity of 200 MT per month (approx.) in 2000 Sq. Mtrs (approx.) area in authorized HUDA industrial zone.

Premium Powder Mfg. Co. has set up a state of Art testing laboratory for testing Raw Materials and Finished Goods. Test equipment includes Spectrophotometer, Particle Size analyser, Artificial Day light chamber e.t.c

We at Premium Powder Mfg. Co. shall be mainly producing ROHS Compliant Green Products. Premium Powder Mfg. Co. commenced its operation thru establishing ISO 9001:2015 certified manufacturing and validating process focused at maximizing customer satisfaction by providing quality products consistently and timely at competitive price with least environmental damage (impact).

WE PROVIDE

Thermosetting powder coatings from Premium Powder Mfg. Co. is available in all finishes like Matt, Satin, Glossy, Texture, Structure, Antique, Wrinkle, Hammer tone, Metallics and Clear etc. in chemistries like Epoxy, Hybrid(Epoxy Polyester), Polyester or Pure Polyester TGIC containing or TGIC free and Polyurethane.

Premium Powder Mfg. Co. has capability to provide Zinc Rich Primer, Epoxy Primer and Outdoor Super Durable powder coatings. We do provide Polyurethane powders for sublimation process.

We produce powder coatings as per standard specifications and/or as per specifications provided by our customer to meet specific parameters (shade or functional) and application requirements.

SPECIAL FEATURES

Premium Powder Mfg. Co. by adopting latest technology has specialized in the following powder coating products.

- High Impact Powders which can resist up to 300 Kg-Cm impact.
- Excellent nail resistance metallic powders.
- Very high alkali resistance powders.
- TGIC free powder coating.
- Superdurable (Non-Metallic).
- Two tone effect / sparkle / marble finish.
- Powders for sublimation process.
- Special patterns powder & wrinkle, crackle etc.

QUALITY CONTROL PROCESS

- Shade data preservation (Digital and in powder form) for shade consistency
- Tolerance at minimal level
- Quality instruments as per ASTM specifications
- Temperature variable oven to analyze and control temperature sensitivity of shades.
- Day night chamber to visual shade matching in standard light medium.
- Strict product specification controls
- Incoming material validation
- In process inspection and final inspection

OUR QUALITY POLICY

We at Premium Powder Mfg. Co. shall strive to provide defect free, high quality products and services as per specifications, statutory requirements and customer satisfaction by:

- Continual improvement in our process, systems and actions.
- Emphasizing Customer satisfaction.
- Strict compliance to applicable standards and regulations.
- Recognising total involvement and participation of entire workforce.

Premium Powder Coatings



PREMIUM